

**SEER\*DMS**  
**Discussion Objectives**  
**Where Structure Meets Science**



SEER

# Objectives

- Frame the discussion around the current and future needs for SEER\*DMS
- SEER\*DMS is the foundation for registry operational activities and future data driven efforts
- Understand the scientific initiatives that require integration
  - Current Landscape of New Data Sources
  - Current Needs for Data Quality
  - Advanced Methodologies and Techniques (i.e. NLP, ML)
- Work together to meet the needs of the registrar, technical advisor, scientist, and clinician communities



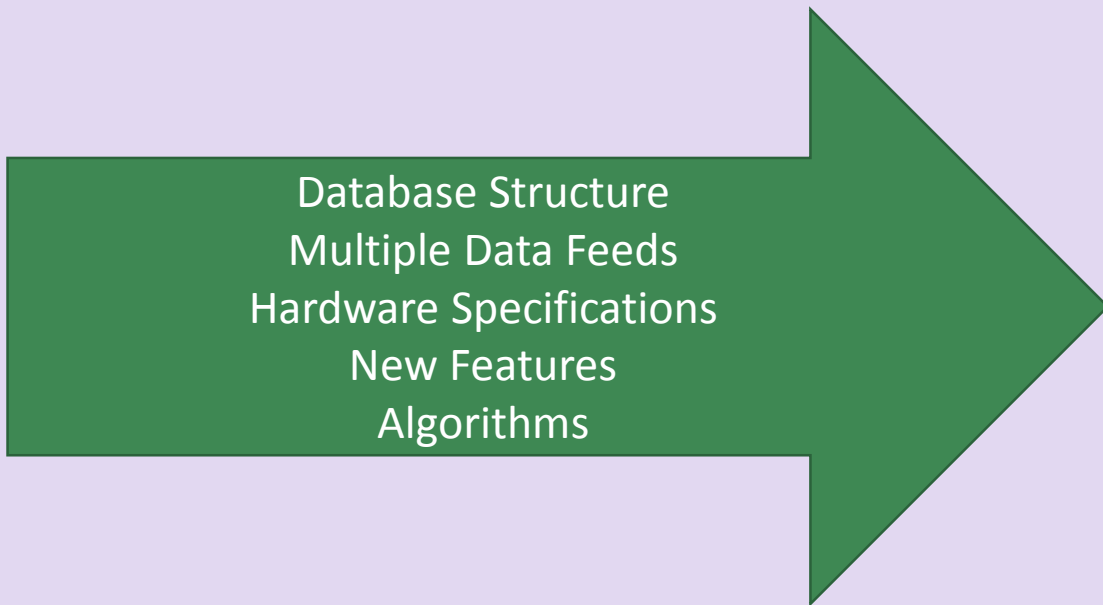
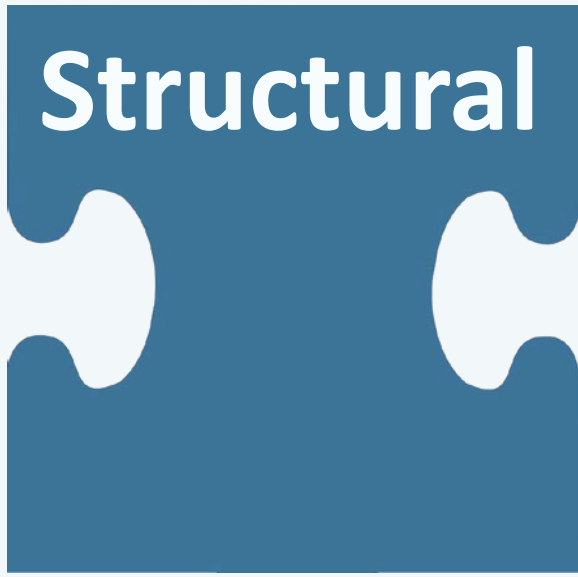
**How do we plan for structural SEER\*DMS changes as we expand our data linkages?**

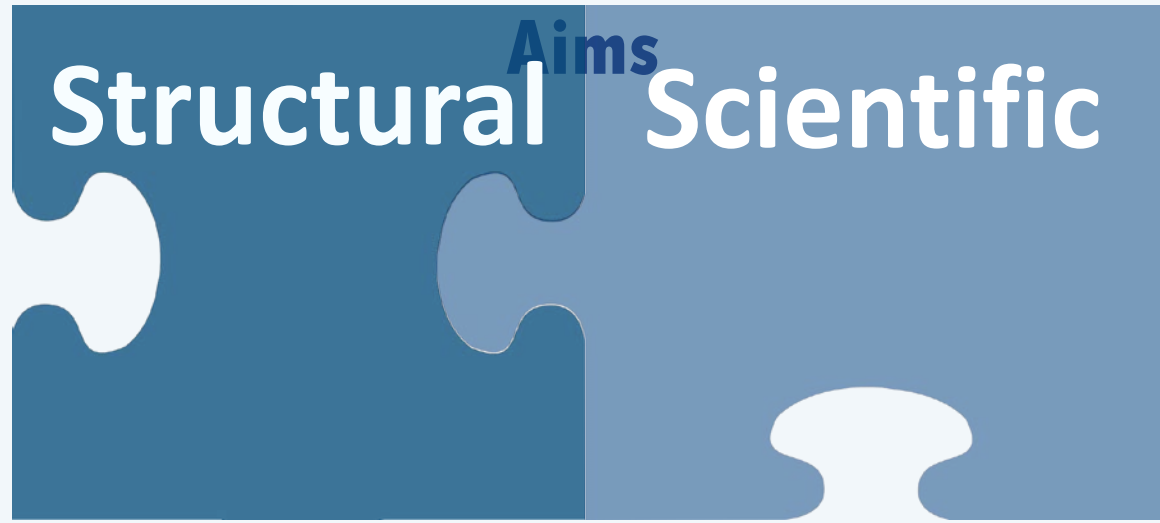
How do we come to understand what each individual registry is doing so that we can leverage these practices to develop SEER wide standards?

**What data sources facilitate registry operations?**

How do we internally develop a plan for SEER\*DMS changes to help improve registry operations?

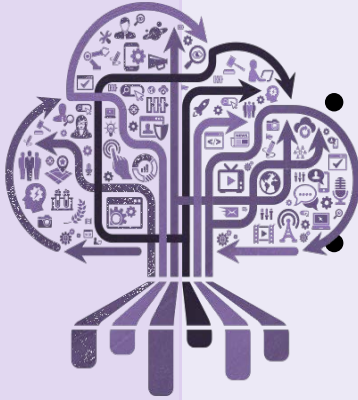






## Data Acquisitions & Linkages

- Example: Do we need to make changes to our server architecture?
- Example: Do we need to account for a new data formats in SEER\*DMS? (Claims 837 format)



## Data Acquisitions & Linkages

- Example: Enhance treatment data through acquisition of oncology practice claims
- Example: Multiple linkage types allow better understanding of outcomes such as recurrence

## Data Quality

- Example: Do we need new edits, tools, processes in SEER\*DMS to improve quality checks?



## Data Quality

- Example: PSA Quality Audit explored decimal point inconsistencies which impact research

- Data Sources
  - Types:
    - Medical Claims
    - Pharmacy
    - Electronic Health Records
    - Radiology
    - Genomic
    - Radiation Oncology
    - Patient Generated Data
    - Supplementary Data (outside healthcare system)
- Data Quality
  - Studies to improve the quality and accuracy of SEER Data
    - PSA
    - Melanoma Tumor Depth
    - HPV



# Registry Data Linkages Working Group

- Registry of the Future Session on Current and Future Data Sources
- Deliverables:
  - In 3 months:
    - ✓ Everyone wants to join this Working Group 😊
    - ✓ Share our decision matrix tool for data linkage evaluation with committee and ask for addition input

In 6 months:

- ✓ Conduct a survey of registries around feasibility and best practices of data linkages
- ✓ Focus on: legal, technical, qualitative, governance for a feasibility study of a single source

In 12 months:

- ✓ Conduct a feasibility study targeting a specific data source defined by the WG

If you would like to join, please email Donna at [donna.rivera@nih.gov](mailto:donna.rivera@nih.gov)



Thank you!

© 2012 Ted Goff



**“Here’s a list of 100,000  
warehouses full of data. I’d like  
you to condense them down to  
one meaningful warehouse.”**